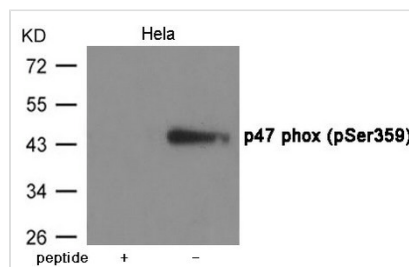




Phospho-NCF1 (Ser359) Antibody

Product Code	CSB-PA933424
Storage	Upon receipt, store at -20°C or -80°C. Avoid repeated freeze.
Uniprot No.	P14598
Immunogen	Peptide sequence around phosphorylation site of Serine 359(Q-R-S(p)-K-P) derived from Human p47 phox.
Raised In	Rabbit
Species Reactivity	Human
Specificity	The antibody detects endogenous level of p47 phox only when phosphorylated at Serine 359.
Tested Applications	ELISA, WB; WB: 1:500-1:1000
Form	Supplied at 1.0mg/mL in phosphate buffered saline (without Mg ²⁺ and Ca ²⁺), pH 7.4, 150mM NaCl, 0.02% sodium azide and 50% glycerol.
Purification Method	Antibodies were produced by immunizing rabbits with synthetic phosphopeptide and KLH conjugates. Antibodies were purified by affinity-chromatography using epitope-specific phosphopeptide. Non-phospho specific antibodies were removed by chromatography using
Clonality	Polyclonal
Alias	NCF1A, NOXO2, p47phox, SH3PXD1A
Product Type	Polyclonal Antibody
Immunogen Species	Homo sapiens (Human)
Target Names	NCF1

Image



Western blot analysis of extracts from HeLa cells using p47 phox (Phospho-Ser359) Antibody. The lane on the left is treated with the antigen-specific peptide.

Product Modify Phospho-Ser359