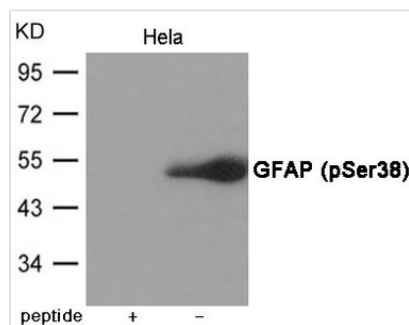




Phospho-GFAP (Ser38) Antibody

Product Code	CSB-PA148282
Storage	Upon receipt, store at -20°C or -80°C. Avoid repeated freeze.
Uniprot No.	P14136
Immunogen	Peptide sequence around phosphorylation site of Serine 38(R-L-S(p)-L-A) derived from Human GFAP.
Raised In	Rabbit
Species Reactivity	Human
Specificity	The antibody detects endogenous level of GFAP only when phosphorylated at Serine 38.
Tested Applications	ELISA,WB;WB:1:500-1:1000
Form	Supplied at 1.0mg/mL in phosphate buffered saline (without Mg ²⁺ and Ca ²⁺), pH 7.4, 150mM NaCl, 0.02% sodium azide and 50% glycerol.
Purification Method	Antibodies were produced by immunizing rabbits with synthetic phosphopeptide and KLH conjugates. Antibodies were purified by affinity-chromatography using epitope-specific phosphopeptide. Non-phospho specific antibodies were removed by chromatography using
Clonality	Polyclonal
Alias	Glial fibrillary acidic protein, astrocyte
Product Type	Polyclonal Antibody
Immunogen Species	Homo sapiens (Human)
Target Names	GFAP

Image



Product Modify Phospho-Ser38