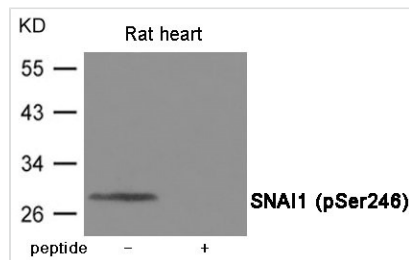




Phospho-SNAI1 (Ser246) Antibody

Product Code	CSB-PA299638
Storage	Upon receipt, store at -20°C or -80°C. Avoid repeated freeze.
Uniprot No.	O95863
Immunogen	Peptide sequence around phosphorylation site of Serine 246(T-F-S(p)-R-M) derived from Human SNAI1.
Raised In	Rabbit
Species Reactivity	Human,Mouse,Rat
Specificity	The antibody detects endogenous level of SNAI1 only when phosphorylated at Serine 246.
Tested Applications	ELISA,WB;WB:1:500-1:1000
Form	Supplied at 1.0mg/mL in phosphate buffered saline (without Mg ²⁺ and Ca ²⁺), pH 7.4, 150mM NaCl, 0.02% sodium azide and 50% glycerol.
Purification Method	Antibodies were produced by immunizing rabbits with synthetic phosphopeptide and KLH conjugates. Antibodies were purified by affinity-chromatography using epitope-specific phosphopeptide. Non-phospho specific antibodies were removed by chromatography use
Clonality	Polyclonal
Alias	SNA, SNAH, SNAIL, SLUGH2, SNAI1
Product Type	Polyclonal Antibody
Immunogen Species	Homo sapiens (Human)
Target Names	SNAI1

Image



Western blot analysis of extracts from Rat heart tissue using SNAI1 (Phospho-Ser246) Antibody. The lane on the right is treated with the antigen-specific peptide.

Product Modify	Phospho-Ser246
Usage	For Research Use Only. Not for use in diagnostic or therapeutic procedures.