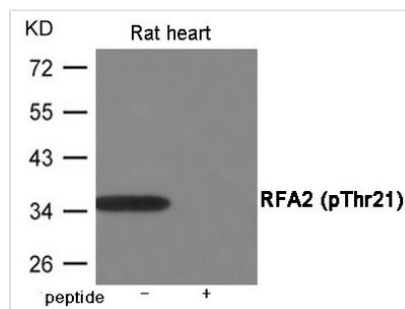




Phospho-RPA2 (Thr21) Antibody

Product Code	CSB-PA573246
Storage	Upon receipt, store at -20°C or -80°C. Avoid repeated freeze.
Uniprot No.	P15927
Immunogen	Peptide sequence around phosphorylation site of Threonine 21(G-Y-T(p)-Q-S) derived from Human RFA2.
Raised In	Rabbit
Species Reactivity	Human,Mouse,Rat
Specificity	The antibody detects endogenous level of RFA2 only when phosphorylated at Threonine 21.
Tested Applications	ELISA,WB;WB:1:500-1:1000
Form	Supplied at 1.0mg/mL in phosphate buffered saline (without Mg ²⁺ and Ca ²⁺), pH 7.4, 150mM NaCl, 0.02% sodium azide and 50% glycerol.
Purification Method	Antibodies were produced by immunizing rabbits with synthetic phosphopeptide and KLH conjugates. Antibodies were purified by affinity-chromatography using epitope-specific phosphopeptide. Non-phospho specific antibodies were removed by chromatography
Clonality	Polyclonal
Alias	REPA2, RPA32
Product Type	Polyclonal Antibody
Immunogen Species	Homo sapiens (Human)
Target Names	RPA2

Image



Product Modify Phospho-Thr21