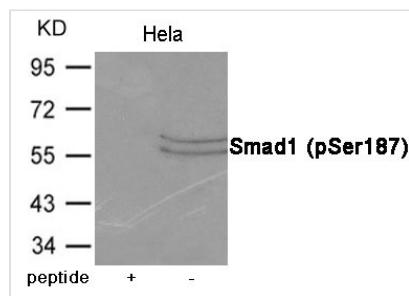




Phospho-SMAD1 (Ser187) Antibody

Product Code	CSB-PA056920
Storage	Upon receipt, store at -20°C or -80°C. Avoid repeated freeze.
Uniprot No.	Q15797
Immunogen	Peptide sequence around phosphorylation site of Serine 187(P-H-S(p)-P-N) derived from Human Smad1.
Raised In	Rabbit
Species Reactivity	Human,Mouse
Specificity	The antibody detects endogenous level of Smad1 only when phosphorylated at Serine 187.
Tested Applications	ELISA,WB;WB:1:500-1:1000
Form	Supplied at 1.0mg/mL in phosphate buffered saline (without Mg ²⁺ and Ca ²⁺), pH 7.4, 150mM NaCl, 0.02% sodium azide and 50% glycerol.
Purification Method	Antibodies were produced by immunizing rabbits with synthetic phosphopeptide and KLH conjugates. Antibodies were purified by affinity-chromatography using epitope-specific phosphopeptide. Non-phospho specific antibodies were removed by chromatography usi
Clonality	Polyclonal
Alias	BSP1, JV41, BSP-1, JV4-1, MADH1
Product Type	Polyclonal Antibody
Immunogen Species	Homo sapiens (Human)
Target Names	SMAD1

Image



Western blot analysis of extracts from HeLa cells using Smad1 (Phospho-Ser187) Antibody. The lane on the left is treated with the antigen-specific peptide.

Product Modify	Phospho-Ser187
Usage	For Research Use Only. Not for use in diagnostic or therapeutic procedures.