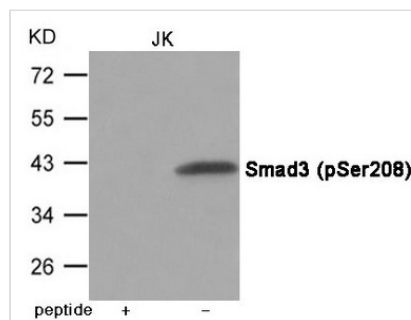




Phospho-SMAD3 (Ser208) Antibody

Product Code	CSB-PA620192
Storage	Upon receipt, store at -20°C or -80°C. Avoid repeated freeze.
Uniprot No.	P84022
Immunogen	Peptide sequence around phosphorylation site of Serine 208(N-L-S(p)-P-N) derived from Human Smad3.
Raised In	Rabbit
Species Reactivity	Human,Mouse,Rat
Specificity	The antibody detects endogenous level of Smad3 only when phosphorylated at Serine 208.
Tested Applications	ELISA,WB;WB:1:500-1:1000
Form	Supplied at 1.0mg/mL in phosphate buffered saline (without Mg ²⁺ and Ca ²⁺), pH 7.4, 150mM NaCl, 0.02% sodium azide and 50% glycerol.
Purification Method	Antibodies were produced by immunizing rabbits with synthetic phosphopeptide and KLH conjugates. Antibodies were purified by affinity-chromatography using epitope-specific phosphopeptide. Non-phospho specific antibodies were removed by chromatography usi
Clonality	Polyclonal
Alias	LDS3, LDS1C, MADH3, JV15-2, HSPC193
Product Type	Polyclonal Antibody
Immunogen Species	Homo sapiens (Human)
Target Names	SMAD3

Image



Western blot analysis of extracts from JK cells using Smad3 (Phospho-Ser208) Antibody. The lane on the left is treated with the antigen-specific peptide.

Product Modify	Phospho-Ser208
Usage	For Research Use Only. Not for use in diagnostic or therapeutic procedures.