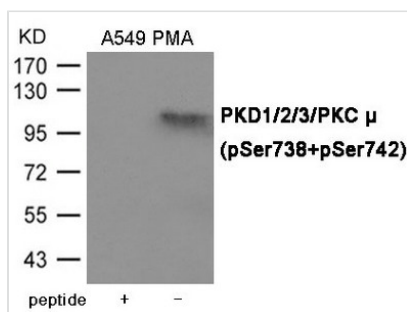




Phospho-PRKD1/PRKD2/PRKD3 (Ser738/742) Antibody

Product Code	CSB-PA233310
Storage	Upon receipt, store at -20°C or -80°C. Avoid repeated freeze.
Immunogen	Peptide sequence around phosphorylation site of Serine738/Serine 742(E-K-S(p)-F-R-R-S(p)-V-V) derived from Human PKD1/2/3/PKC μ .
Raised In	Rabbit
Species Reactivity	Human,Mouse,Rat
Specificity	The antibody detects endogenous level of PKD1/2/3/PKC μ only when phosphorylated at Serine 738/742.
Tested Applications	ELISA,WB;WB:1:500-1:1000
Form	Supplied at 1.0mg/mL in phosphate buffered saline (without Mg ²⁺ and Ca ²⁺), pH 7.4, 150mM NaCl, 0.02% sodium azide and 50% glycerol.
Purification Method	Antibodies were produced by immunizing rabbits with synthetic phosphopeptide and KLH conjugates. Antibodies were purified by affinity-chromatography using epitope-specific phosphopeptide. Non-phospho specific antibodies were removed by chromatogramphy usi
Clonality	Polyclonal
Alias	PKD, PKCM, PRKCM, PKC-MU
Product Type	Polyclonal Antibody
Immunogen Species	Homo sapiens (Human)
Target Names	PRKD1/PRKD2/PRKD3
Accession NO.	Swiss-Prot: Q15139/Q9BZL6/O94806;

Image



Western blot analysis of extracts from A549 cells with PMA using PKD1/2/3/PKC μ (Phospho-Ser738+Ser742) Antibody. The lane on the left is treated with the antigen-specific peptide.

Product Modify	Phospho-Ser738/742
Usage	For Research Use Only. Not for use in diagnostic or therapeutic procedures.