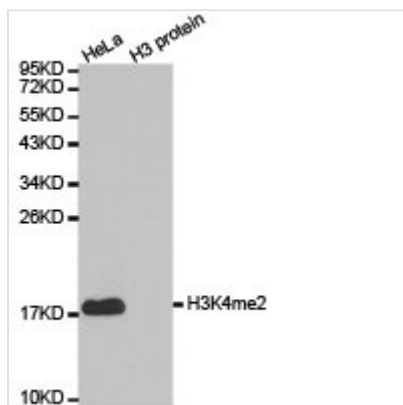




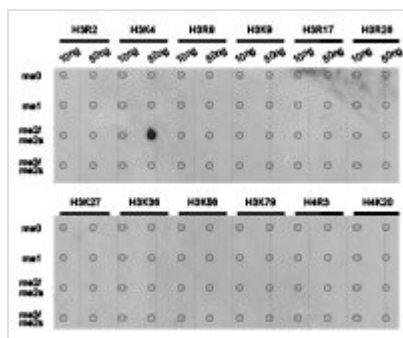
Histone H3K4me2 Antibody

| | |
|----------------------------|--|
| Product Code | CSB-PA087078 |
| Storage | Upon receipt, store at -20°C or -80°C. Avoid repeated freeze. |
| Uniprot No. | GeneID:8290SwissProt:Q16695 |
| Immunogen | A synthetic methylated peptide corresponding to residues surrounding K4 of Human histone H3 |
| Raised In | Rabbit |
| Species Reactivity | Human,Mouse,Rat |
| Tested Applications | ELISA,WB,IHC,IF,IP,ChIP;WB:1:500-1:2000,IHC:1:50-1:200,IF:1:50-1:200,IP:1:50-1:200,ChIP:1:50-1:200 |
| Form | Buffer: PBS with 0.02% sodium azide, 50% glycerol, pH7.3. |
| Purification Method | Antigen Affinity Purified |
| Clonality | Polyclonal |
| Alias | HIST1H3J; H3/j;H3FJ; Histone H3.1; Histone H3/a; Histone H3/b; Histone H3/c; Histone H3/d; Histone H3/f; Histone H3/h; Histone H3/l; HistoneH3/j; Histone H3/k; Histone H3/l; HIST3H3; |
| Product Type | Polyclonal Antibody |
| Immunogen Species | Homo sapiens (Human) |
| Target Names | HIST3H3 |

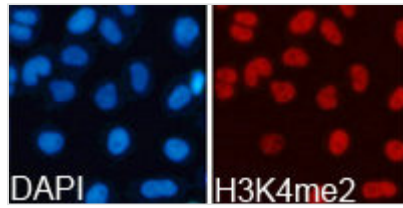
Image



Western blot analysis of extracts of HeLa cell line and H3 protein expressed in E.coli., using H3K4me2 antibody.



Dot-blot analysis of all sorts of methylation peptides using H3K4me3 antibody.



Immunofluorescence analysis of 293T cell using H3K4me2 antibody. Blue: DAPI for nuclear staining.

Product Modify

K4me2

Usage

For Research Use Only. Not for use in diagnostic or therapeutic procedures.