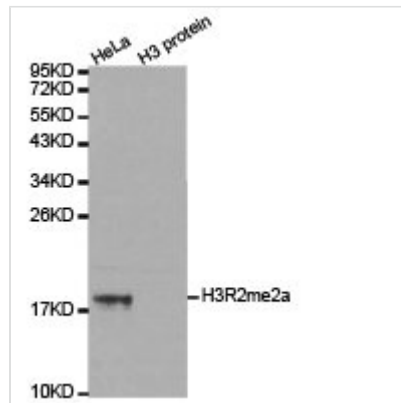




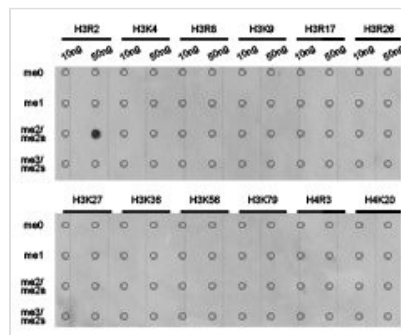
# Histone H3R2me2a Antibody

<b>Product Code</b>	CSB-PA441266
<b>Storage</b>	Upon receipt, store at -20°C or -80°C. Avoid repeated freeze.
<b>Uniprot No.</b>	GeneID:8290SwissProt:Q16695
<b>Immunogen</b>	A synthetic methylated peptide corresponding to residues surrounding R2 of Human histone H3
<b>Raised In</b>	Rabbit
<b>Species Reactivity</b>	Human,Mouse,Rat
<b>Tested Applications</b>	ELISA,WB,IHC,IF;WB:1:500-1:2000,IHC:1:50-1:200,IF:1:50-1:200
<b>Form</b>	Buffer: PBS with 0.02% sodium azide, 50% glycerol, pH7.3.
<b>Purification Method</b>	Antigen Affinity Purified
<b>Clonality</b>	Polyclonal
<b>Alias</b>	HIST1H3J; H3/j; H3FJ; Histone H3.1; Histone H3/a; Histone H3/b; Histone H3/c; Histone H3/d; Histone H3/f; Histone H3/h; Histone H3/l; HistoneH3/j; Histone H3/k; Histone H3/l; HIST3H3;
<b>Product Type</b>	Polyclonal Antibody
<b>Immunogen Species</b>	Homo sapiens (Human)
<b>Target Names</b>	HIST3H3

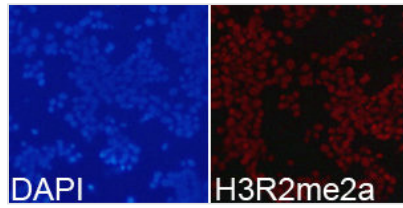
## Image



Western blot analysis of extracts of HeLa cell line and H3 protein expressed in E.coli., using H3R2me2a antibody.



Dot-blot analysis of all sorts of methylation peptides using H3R2me2a antibody.



Immunofluorescence analysis of 293T cell using H3R2me2a antibody. Blue: DAPI for nuclear staining.

---

**Product Modify**

R2me2a

---

**Usage**

For Research Use Only. Not for use in diagnostic or therapeutic procedures.