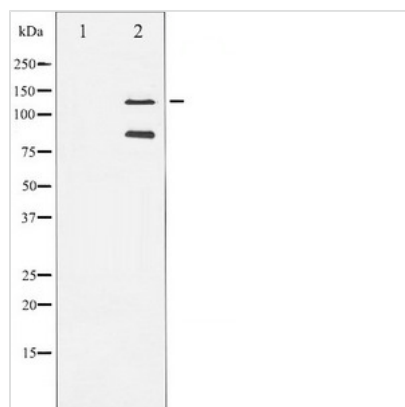




Cleaved-PARP1 (A214) Antibody

Product Code	CSB-PA010134
Storage	Upon receipt, store at -20°C or -80°C. Avoid repeated freeze.
Uniprot No.	P09874
Raised In	Rabbit
Species Reactivity	Human,Mouse
Specificity	PARP (Cleaved-Asp214) Antibody detects endogenous levels of fragment of activated PARP resulting from cleavage adjacent to Asp214.
Tested Applications	ELISA,WB;WB:1:500-1:2000
Form	Rabbit IgG in phosphate buffered saline , pH 7.4, 150mM NaCl, 0.02% sodium azide and 50% glycerol.Store at -20 °C.Stable for 14 months from date of receipt
Purification Method	Antigen Affinity Purified
Clonality	Polyclonal
Alias	ADP-ribosyltransferase 1; ADPRT; ADPRT1; pADPRT-1; PARP; PARP-1; poly (ADP-ribose) pol; poly [ADP-ribose] polymerase 1; poly[ADP-ribose] synthetase 1; PPOL
Product Type	Polyclonal Antibody
Immunogen Species	Homo sapiens (Human)
Target Names	PARP1

Image



Western blot analysis of extracts from A549 cells, The lane on the left is treated with the antigen-specific peptide.