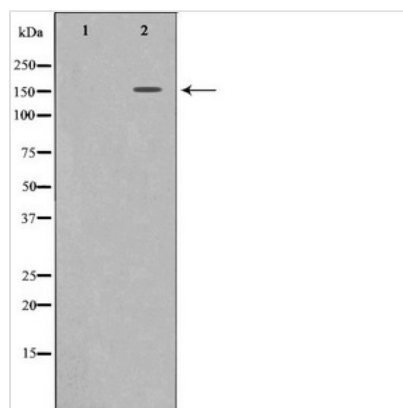




MET Antibody

Product Code	CSB-PA933202
Storage	Upon receipt, store at -20°C or -80°C. Avoid repeated freeze.
Uniprot No.	P08581
Immunogen	A synthesized peptide derived from Human c-Met
Raised In	Rabbit
Species Reactivity	Human,Mouse,Rat
Specificity	c-Met Antibody detects endogenous levels of total c-Met
Tested Applications	ELISA, WB, IF; WB:1:500-1:2000, IF:1:50-1:500
Form	Rabbit IgG in phosphate buffered saline , pH 7.4, 150mM NaCl, 0.02% sodium azide and 50% glycerol.
Purification Method	Antigen Affinity Purified
Clonality	Polyclonal
Alias	EC 2.7.10.1, HGF receptor, HGF-SF receptor, Hepatocyte growth factor receptor precursor, Met proto- oncogene tyrosine kinase, c-met, kinase EC 2.7.10.1, HGF receptor, HGF-SF receptor, Hepatocyte growth factor receptor precursor, Met proto- oncogene tyros
Product Type	Polyclonal Antibody
Immunogen Species	Homo sapiens (Human)
Target Names	MET

Image



Western blot analysis of c-Met expression in HepG2 whole cell lysates, The lane on the left is treated with the antigen-specific peptide.

Usage

For Research Use Only. Not for use in diagnostic or therapeutic procedures.