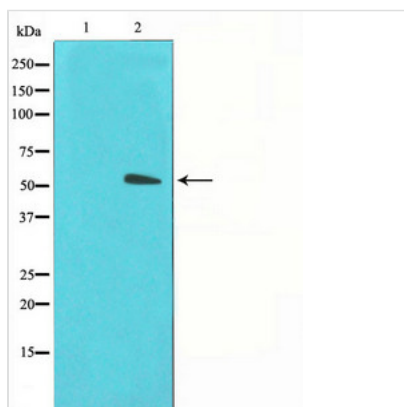




SLC2A3 Antibody

Product Code	CSB-PA868995
Storage	Upon receipt, store at -20°C or -80°C. Avoid repeated freeze.
Uniprot No.	P11169
Immunogen	A synthesized peptide derived from Human GLUT3
Raised In	Rabbit
Species Reactivity	Human
Specificity	GLUT3 antibody detects endogenous levels of total GLUT3
Tested Applications	ELISA,WB,IHC;WB:1:500-1:2000,IHC:1:50-1:200
Form	Rabbit IgG in phosphate buffered saline , pH 7.4, 150mM NaCl, 0.02% sodium azide and 50% glycerol.
Purification Method	Affinity-chromatography
Clonality	Polyclonal
Alias	FLJ90380; Glucose transporter type 3, brain; GLUT-3; GLUT3; GTR3; SLC2A3; solute carrier family 2 (facilitated glucose transporter), member 3; Solute carrier family 2, facilitated glucose transporter member 3
Product Type	Polyclonal Antibody
Immunogen Species	Homo sapiens (Human)
Target Names	SLC2A3

Image



Western blot analysis on LOVO cell lysate using GLUT3 Antibody

Usage For Research Use Only. Not for use in diagnostic or therapeutic procedures.