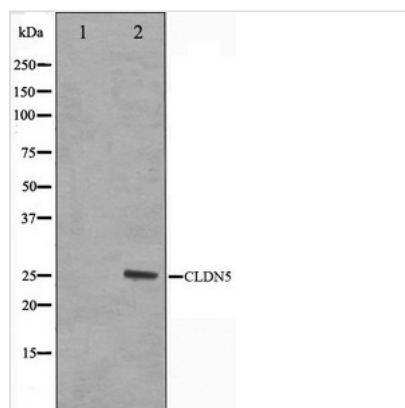




# CLDN5 Antibody

<b>Product Code</b>	CSB-PA275485
<b>Storage</b>	Upon receipt, store at -20°C or -80°C. Avoid repeated freeze.
<b>Uniprot No.</b>	O00501
<b>Immunogen</b>	A synthesized peptide derived from Human Claudin 5
<b>Raised In</b>	Rabbit
<b>Species Reactivity</b>	Human,Mouse,Rat
<b>Specificity</b>	Claudin 5 antibody detects endogenous levels of total Claudin 5
<b>Tested Applications</b>	ELISA,WB,IHC;WB:1:500-1:2000,IHC:1:50-1:200
<b>Form</b>	Rabbit IgG in phosphate buffered saline , pH 7.4, 150mM NaCl, 0.02% sodium azide and 50% glycerol.
<b>Purification Method</b>	Affinity-chromatography
<b>Clonality</b>	Polyclonal
<b>Alias</b>	androgen withdrawal and apoptosis induced protein RVP1-like; AWAL; BEC1; claudin 5; Claudin-5; CLD5; CLDN5; CPETRL1; TMDVCF; TMVCF; Transmembrane protein deleted in VCFS; transmembrane protein deleted in velocardiofacial syndrome
<b>Product Type</b>	Polyclonal Antibody
<b>Immunogen Species</b>	Homo sapiens (Human)
<b>Target Names</b>	CLDN5

## Image



Western blot analysis on A549 cell lysate using Claudin 5 Antibody

## Usage

For Research Use Only. Not for use in diagnostic or therapeutic procedures.