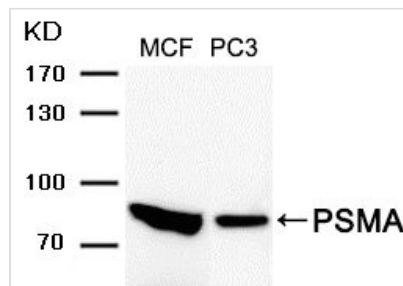




# FOLH1 Antibody

<b>Product Code</b>	CSB-PA167493
<b>Storage</b>	Upon receipt, store at -20°C or -80°C. Avoid repeated freeze.
<b>Uniprot No.</b>	Q04609
<b>Immunogen</b>	Peptide sequence around aa.738~750 (A-A-E-T-L) derived Human from PSMA.
<b>Species Reactivity</b>	Human
<b>Specificity</b>	The antibody detects endogenous level of total PSMA protein.
<b>Tested Applications</b>	ELISA,WB;WB:1:500-1:1000
<b>Form</b>	Supplied at 1.0mg/mL in phosphate buffered saline (without Mg <sup>2+</sup> and Ca <sup>2+</sup> ), pH 7.4, 150mM NaCl, 0.02% sodium azide and 50% glycerol.
<b>Purification Method</b>	Antibodies were produced by immunizing rabbits with synthetic peptide and KLH conjugates. Antibodies were purified by affinity-chromatography using epitope-specific peptide.
<b>Clonality</b>	Polyclonal
<b>Alias</b>	FGCP; Folate hydrolase 1; FOLH; FOLH1; GCP2
<b>Product Type</b>	Polyclonal Antibody
<b>Immunogen Species</b>	Homo sapiens (Human)
<b>Target Names</b>	FOLH1

## Image



Western blot analysis of extracts from MCF and PC3 cells using PSMA Antibody .

## Usage

For Research Use Only. Not for use in diagnostic or therapeutic procedures.