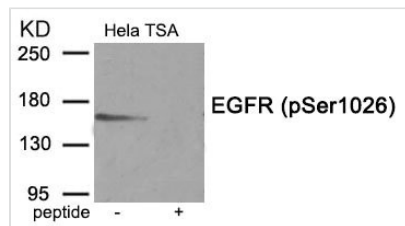




Phospho-EGFR (Ser1026) Antibody

Product Code	CSB-PA957122
Storage	Upon receipt, store at -20°C or -80°C. Avoid repeated freeze.
Uniprot No.	P00533
Immunogen	Peptide sequence around phosphorylation site of serine 1026 (P-S-S(p)-P-S) derived from Human EGFR.
Raised In	Rabbit
Species Reactivity	Human,Mouse,Rat
Specificity	The antibody detects endogenous level of EGFR only when phosphorylated at serine 1026.
Tested Applications	ELISA,WB;WB:1:500-1:1000
Form	Rabbit IgG in phosphate buffered saline (without Mg ²⁺ and Ca ²⁺), pH 7.4, 150mM NaCl, 0.02% sodium azide and 50% glycerol.
Purification Method	Antibodies were produced by immunizing rabbits with synthetic phosphopeptide and KLH conjugates. Antibodies were purified by affinity-chromatography using epitope-specific phosphopeptide. Non-phospho specific antibodies were removed by chromatography using non-phosphopeptide.
Clonality	Polyclonal
Alias	ERBB1; Epidermal growth factor receptor precursor; kinase EGFR;
Product Type	Polyclonal Antibody
Immunogen Species	Homo sapiens (Human)
Target Names	EGFR

Image



Western blot analysis of extracts from HeLa cells treated with TSA using Phospho-EGFR (Ser1026) antibody. The lane on the right is treated with the antigen-specific peptide.

Product Modify Phospho-Ser1026