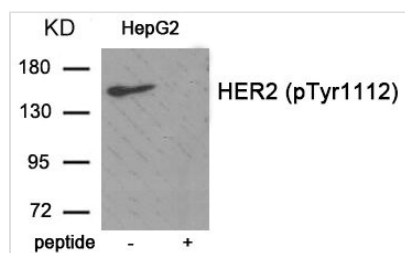


Phospho-ERBB2 (Tyr1112) Antibody

Product Code	CSB-PA761682
Storage	Upon receipt, store at -20°C or -80°C. Avoid repeated freeze.
Uniprot No.	P04626
Immunogen	Peptide sequence around phosphorylation site of tyrosine 1112 (Q-R-Y(p)-S-E) derived from Human HER2.
Raised In	Rabbit
Species Reactivity	Human,Mouse,Rat
Specificity	The antibody detects endogenous level of HER2 only when phosphorylated at tyrosine 1112.
Tested Applications	ELISA,WB;WB:1:500-1:1000
Form	Rabbit IgG in phosphate buffered saline (without Mg ²⁺ and Ca ²⁺), pH 7.4, 150mM NaCl, 0.02% sodium azide and 50% glycerol.
Purification Method	Antibodies were produced by immunizing rabbits with synthetic phosphopeptide and KLH conjugates. Antibodies were purified by affinity-chromatography using epitope-specific phosphopeptide. Non-phospho specific antibodies were removed by chromatography using
Clonality	Polyclonal
Alias	C-erbB-2; NGL; NEU proto-oncogene; MLN 19;
Product Type	Polyclonal Antibody
Immunogen Species	Homo sapiens (Human)
Target Names	ERBB2

Image



Western blot analysis of extracts from HepG2 tissue using HER2 (Phospho-Tyr1112) antibody. The lane on the right is treated with the antigen-specific peptide.

Product Modify	Phospho-Tyr1112
-----------------------	-----------------