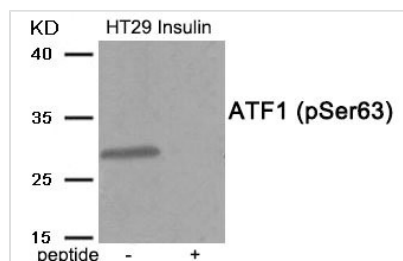




Phospho-ATF1 (Ser63) Antibody

Product Code	CSB-PA107926
Storage	Upon receipt, store at -20°C or -80°C. Avoid repeated freeze.
Uniprot No.	P18846
Immunogen	Peptide sequence around phosphorylation site of serine 63(R-P-S(p)-Y-R) derived from Human ATF1 .
Raised In	Rabbit
Species Reactivity	Human,Mouse
Specificity	The antibody detects endogenous level of ATF1 only when phosphorylated at serine 63.
Tested Applications	ELISA,WB;WB:1:500-1:1000
Form	Rabbit IgG in phosphate buffered saline (without Mg ²⁺ and Ca ²⁺), pH 7.4, 150mM NaCl, 0.02% sodium azide and 50% glycerol.
Purification Method	Antibodies were produced by immunizing rabbits with synthetic phosphopeptide and KLH conjugates. Antibodies were purified by affinity-chromatography using epitope-specific phosphopeptide. Non-phospho specific antibodies were removed by chromatography
Clonality	Polyclonal
Alias	ATF1; Activating transcription factor 1; Cyclic-AMP-dependent transcription factor ATF-1; TCR-ATF1; TREB36 protein
Product Type	Polyclonal Antibody
Immunogen Species	Homo sapiens (Human)
Target Names	ATF1

Image



Western blot analysis of extracts from HT29 cells treated with Insulin using Phospho-ATF1 (Ser63) antibody. The lane on the right is treated with the antigen-specific peptide.

Product Modify Phospho-Ser63