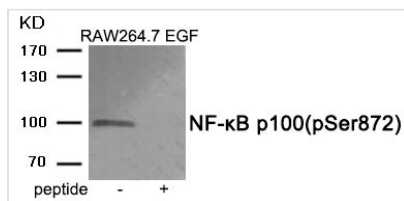




Phospho-NFKB2 (Ser872) Antibody

Product Code	CSB-PA163283
Storage	Upon receipt, store at -20°C or -80°C. Avoid repeated freeze.
Uniprot No.	Q00653
Immunogen	Peptide sequence around phosphorylation site of serine872(S-Q-S(p)-V-E) derived from Human NF-κB p100 .
Raised In	Rabbit
Species Reactivity	Human,Mouse
Specificity	The antibody detects endogenous level of NF-κB p100 only when phosphorylated at serine 872.
Tested Applications	ELISA,WB;WB:1:500-1:1000
Form	Rabbit IgG in phosphate buffered saline (without Mg ²⁺ and Ca ²⁺), pH 7.4, 150mM NaCl, 0.02% sodium azide and 50% glycerol.
Purification Method	Antibodies were produced by immunizing rabbits with synthetic phosphopeptide and KLH conjugates. Antibodies were purified by affinity-chromatography using epitope-specific phosphopeptide. Non-phospho specific antibodies were removed by chromatography usi
Clonality	Polyclonal
Alias	DNA-binding factor KBF2; Lymphocyte translocation chromosome 10; Lyt10; Nuclear factor NF-kappa-B p100 subunit; Oncogene Lyt-10
Product Type	Polyclonal Antibody
Immunogen Species	Homo sapiens (Human)
Target Names	NFKB2

Image



Western blot analysis of extracts from RAW264.7 cells treated with EGF using Phospho-NF-κB p100 (Ser872) antibody. The lane on the right is treated with the antigen-specific peptide.

Product Modify	Phospho-Ser872
Usage	For Research Use Only. Not for use in diagnostic or therapeutic procedures.