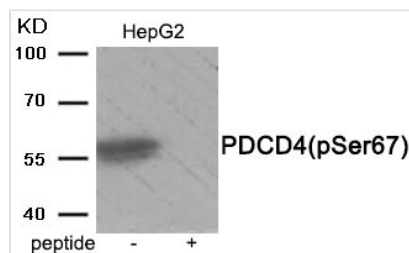




Phospho-PDCD4 (Ser67) Antibody

| | |
|----------------------------|--|
| Product Code | CSB-PA047784 |
| Storage | Upon receipt, store at -20°C or -80°C. Avoid repeated freeze. |
| Uniprot No. | Q53EL6 |
| Immunogen | Peptide sequence around phosphorylation site of serine 67 (K-N-S(p)-S-R) derived from Human PDCD4 . |
| Raised In | Rabbit |
| Species Reactivity | Human,Mouse,Rat |
| Specificity | The antibody detects endogenous level of PDCD4 only when phosphorylated at serine 67. |
| Tested Applications | ELISA,WB;WB:1:500-1:1000 |
| Form | Rabbit IgG in phosphate buffered saline (without Mg ²⁺ and Ca ²⁺), pH 7.4, 150mM NaCl, 0.02% sodium azide and 50% glycerol. |
| Purification Method | Antibodies were produced by immunizing rabbits with synthetic phosphopeptide and KLH conjugates. Antibodies were purified by affinity-chromatography using epitope-specific phosphopeptide. Non-phospho specific antibodies were removed by chromatography using |
| Clonality | Polyclonal |
| Alias | neoplastic transformation inhibitor; |
| Product Type | Polyclonal Antibody |
| Immunogen Species | Homo sapiens (Human) |
| Target Names | PDCD4 |

Image



Western blot analysis of extracts from HepG2 tissue using Phospho-PDCD4 (Ser67) antibody. The lane on the right is treated with the antigen-specific peptide.

Product Modify Phospho-Ser67