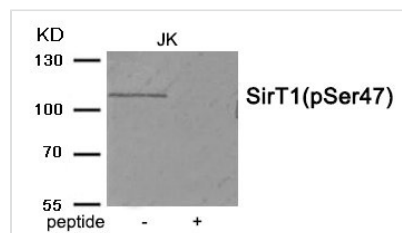




# Phospho-SIRT1 (Ser47) Antibody

<b>Product Code</b>	CSB-PA857953
<b>Storage</b>	Upon receipt, store at -20°C or -80°C. Avoid repeated freeze.
<b>Uniprot No.</b>	Q96EB6
<b>Immunogen</b>	Peptide sequence around phosphorylation site of serine 47(E-R-S(p)-P-G) derived from Human SirT1.
<b>Raised In</b>	Rabbit
<b>Species Reactivity</b>	Human,Mouse
<b>Specificity</b>	The antibody detects endogenous level of SirT1 only when phosphorylated at serine 47.
<b>Tested Applications</b>	ELISA,WB;WB:1:500-1:1000
<b>Form</b>	Rabbit IgG in phosphate buffered saline (without Mg <sup>2+</sup> and Ca <sup>2+</sup> ), pH 7.4, 150mM NaCl, 0.02% sodium azide and 50% glycerol.
<b>Purification Method</b>	Antibodies were produced by immunizing rabbits with synthetic phosphopeptide and KLH conjugates. Antibodies were purified by affinity-chromatography using epitope-specific phosphopeptide. Non-phospho specific antibodies were removed by chromatography usi
<b>Clonality</b>	Polyclonal
<b>Alias</b>	hSIR2; hSIRT1; NAD-dependent deacetylase sirtuin 1; SIR1; SIR2L1
<b>Product Type</b>	Polyclonal Antibody
<b>Immunogen Species</b>	Homo sapiens (Human)
<b>Target Names</b>	SIRT1

## Image



Western blot analysis of extracts from JK tissue using SirT1 (Phospho-Ser47) antibody. The lane on the right is treated with the antigen-specific peptide.

<b>Product Modify</b>	Phospho-Ser47
<b>Usage</b>	For Research Use Only. Not for use in diagnostic or therapeutic procedures.