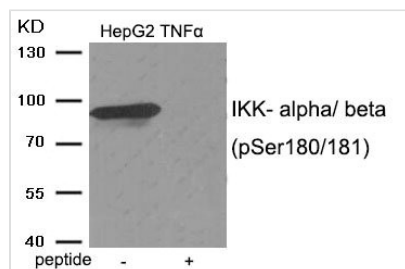




Phospho-CHUK/IKBKB (Ser180/181) Antibody

Product Code	CSB-PA586587
Storage	Upon receipt, store at -20°C or -80°C. Avoid repeated freeze.
Uniprot No.	O15111
Immunogen	Peptide sequence around phosphorylation site of serine 180/181 (C-T-S(p)-F-V) derived from Human IKK- alpha/ beta.
Raised In	Rabbit
Species Reactivity	Human,Mouse,Rat
Specificity	The antibody detects endogenous level of IKK- alpha/beta only when phosphorylated at serine 180/181.
Tested Applications	ELISA,WB;WB:1:500-1:1000
Form	Rabbit IgG in phosphate buffered saline (without Mg ²⁺ and Ca ²⁺), pH 7.4, 150mM NaCl, 0.02% sodium azide and 50% glycerol.
Purification Method	Antibodies were produced by immunizing rabbits with synthetic phosphopeptide and KLH conjugates. Antibodies were purified by affinity-chromatography using epitope-specific phosphopeptide. Non-phospho specific antibodies were removed by chromatography
Clonality	Polyclonal
Alias	FLJ40509; I-kappa-B kinase; IKBKB; kinase beta; NFKBIKB
Product Type	Polyclonal Antibody
Immunogen Species	Homo sapiens (Human)
Target Names	CHUK/IKBKB

Image



Western blot analysis of extracts from HepG2 cells treated with TNF using IKK- alpha/ beta (Phospho-Ser180/181) antibody. The lane on the right is treated with the antigen-specific peptide.

Product Modify	Phospho-Ser180/181
-----------------------	--------------------