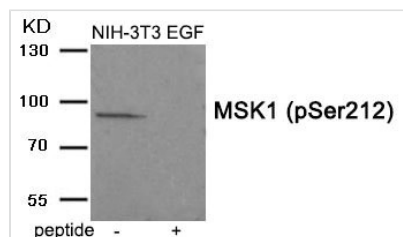




Phospho-RPS6KA5 (Ser212) Antibody

Product Code	CSB-PA997224
Storage	Upon receipt, store at -20°C or -80°C. Avoid repeated freeze.
Uniprot No.	O75582
Immunogen	Peptide sequence around phosphorylation site of serine 212 (A-Y-S(p)-F-C) derived from Human MSK1.
Raised In	Rabbit
Species Reactivity	Human,Mouse
Specificity	The antibody detects endogenous level of MSK1 only when phosphorylated at serine 212.
Tested Applications	ELISA,WB;WB:1:500-1:1000
Form	Rabbit IgG in phosphate buffered saline (without Mg ²⁺ and Ca ²⁺), pH 7.4, 150mM NaCl, 0.02% sodium azide and 50% glycerol.
Purification Method	Antibodies were produced by immunizing rabbits with synthetic phosphopeptide and KLH conjugates. Antibodies were purified by affinity-chromatography using epitope-specific phosphopeptide. Non-phospho specific antibodies were removed by chromatography using
Clonality	Polyclonal
Alias	polypeptide 5; KS6A5; MSPK1; RPS6KA5; RLPK
Product Type	Polyclonal Antibody
Immunogen Species	Homo sapiens (Human)
Target Names	RPS6KA5

Image



Western blot analysis of extracts from NIH-3T3 cells treated with EGF using MSK1 (Phospho-Ser212) antibody. The lane on the right is treated with the antigen-specific peptide.

Product Modify Phospho-Ser212