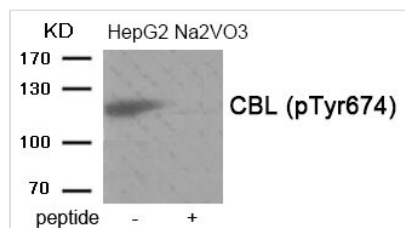




Phospho-CBL (Tyr674) Antibody

Product Code	CSB-PA574497
Storage	Upon receipt, store at -20°C or -80°C. Avoid repeated freeze.
Uniprot No.	P22681
Immunogen	Peptide sequence around phosphorylation site of Tyrosine674 (A-I-Y(p)-S-L) derived from Human CBL.
Raised In	Rabbit
Species Reactivity	Human,Mouse,Rat
Specificity	The antibody detects endogenous level of CBL only when phosphorylated at tyrosine 674.
Tested Applications	ELISA,WB;WB:1:500-1:1000
Form	Rabbit IgG in phosphate buffered saline (without Mg ²⁺ and Ca ²⁺), pH 7.4, 150mM NaCl, 0.02% sodium azide and 50% glycerol.
Purification Method	Antibodies were produced by immunizing rabbits with synthetic phosphopeptide and KLH conjugates. Antibodies were purified by affinity-chromatography using epitope-specific phosphopeptide. Non-phospho specific antibodies were removed by chromatography using
Clonality	Polyclonal
Alias	C-CBL; CBL2; Proto-oncogene c-Cbl; RNF55;
Product Type	Polyclonal Antibody
Immunogen Species	Homo sapiens (Human)
Target Names	CBL

Image



Western blot analysis of extracts from HepG2 cells treated with Na₂VO₃ using Phospho-CBL (Tyr674) antibody. The lane on the right is treated with the antigen-specific peptide.

Product Modify Phospho-Tyr674