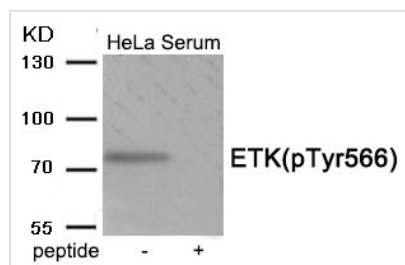




Phospho-BMX (Tyr566) Antibody

Product Code	CSB-PA993762
Storage	Upon receipt, store at -20°C or -80°C. Avoid repeated freeze.
Uniprot No.	P51813
Immunogen	Peptide sequence around phosphorylation site of Tyrosine566 (D-Q-Y(p)-V-S) derived from Human ETK.
Raised In	Rabbit
Species Reactivity	Human,Mouse
Specificity	The antibody detects endogenous level of ETK only when phosphorylated at tyrosine 566.
Tested Applications	ELISA,WB;WB:1:500-1:1000
Form	Rabbit IgG in phosphate buffered saline (without Mg ²⁺ and Ca ²⁺), pH 7.4, 150mM NaCl, 0.02% sodium azide and 50% glycerol.
Purification Method	Antibodies were produced by immunizing rabbits with synthetic phosphopeptide and KLH conjugates. Antibodies were purified by affinity-chromatography using epitope-specific phosphopeptide. Non-phospho specific antibodies were removed by chromatography usi
Clonality	Polyclonal
Alias	BMX; BMX NON-receptor tyrosine kinase; Bone marrow kinase BMX; Epithelial and endothelial tyrosine kinase; NTK38
Product Type	Polyclonal Antibody
Immunogen Species	Homo sapiens (Human)
Target Names	BMX

Image



Western blot analysis of extracts from HeLa cells treated with Serum using Phospho-ETK (Tyr566) antibody. The lane on the right is treated with the antigen-specific peptide.

Product Modify	Phospho-Tyr566
Usage	For Research Use Only. Not for use in diagnostic or therapeutic procedures.