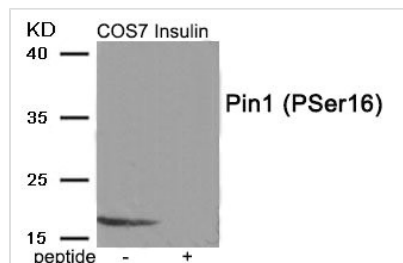




Phospho-PIN1 (Ser16) Antibody

Product Code	CSB-PA801966
Storage	Upon receipt, store at -20°C or -80°C. Avoid repeated freeze.
Uniprot No.	Q13526
Immunogen	Peptide sequence around phosphorylation site of serine16(R-M-S(p)-R-S) derived from Human Pin1 .
Raised In	Rabbit
Species Reactivity	Human,Mouse,Rat
Specificity	The antibody detects endogenous level of Pin1 only when phosphorylated at serine 16.
Tested Applications	ELISA,WB;WB:1:500-1:1000
Form	Rabbit IgG in phosphate buffered saline (without Mg ²⁺ and Ca ²⁺), pH 7.4, 150mM NaCl, 0.02% sodium azide and 50% glycerol.
Purification Method	Antibodies were produced by immunizing rabbits with synthetic phosphopeptide and KLH conjugates. Antibodies were purified by affinity-chromatography using epitope-specific phosphopeptide. Non-phospho specific antibodies were removed by chromatography using
Clonality	Polyclonal
Alias	PPIase Pin1; Rotamase Pin1; Peptidyl-prolyl cis-trans isomerase NIMA-interacting 1; EC 5.2.1.8;
Product Type	Polyclonal Antibody
Immunogen Species	Homo sapiens (Human)
Target Names	PIN1

Image



Western blot analysis of extracts from COS7 cells treated with Insulin using Phospho-Pin1 (Ser16) antibody. The lane on the right is treated with the antigen-specific peptide.

Product Modify Phospho-Ser16