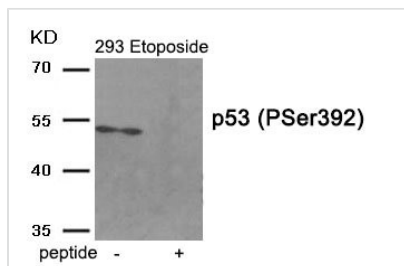




Phospho-TP53 (Ser392) Antibody

Product Code	CSB-PA052612
Storage	Upon receipt, store at -20°C or -80°C. Avoid repeated freeze.
Uniprot No.	P04637
Immunogen	Peptide sequence around phosphorylation site of serine 392 (P-D-S(p)-D) derived from Human p53.
Raised In	Rabbit
Species Reactivity	Human
Specificity	The antibody detects endogenous level of p53 only when phosphorylated at serine 392.
Tested Applications	ELISA, WB; WB: 1:500-1:1000
Form	Rabbit IgG in phosphate buffered saline (without Mg ²⁺ and Ca ²⁺), pH 7.4, 150mM NaCl, 0.02% sodium azide and 50% glycerol.
Purification Method	Antibodies were produced by immunizing rabbits with synthetic phosphopeptide and KLH conjugates. Antibodies were purified by affinity-chromatography using epitope-specific phosphopeptide. Non-phospho specific antibodies were removed by chromatography using
Clonality	Polyclonal
Alias	Antigen NY-CO-13; Cellular tumor antigen p53; Phosphoprotein p53; TP53; Tumor suppressor p53
Product Type	Polyclonal Antibody
Immunogen Species	Homo sapiens (Human)
Target Names	TP53

Image



Western blot analysis of extracts from 293 cells treated with Etoposide using Phospho-p53 (Ser392) antibody. The lane on the right is treated with the antigen-specific peptide.

Product Modify Phospho-Ser392