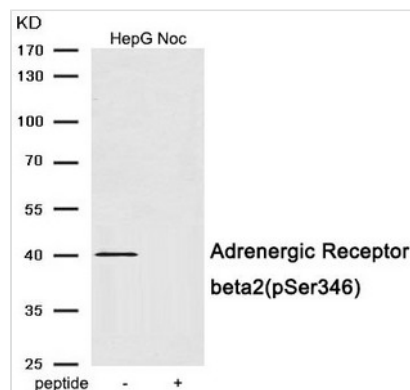




Phospho-ADRB2 (Ser346) Antibody

Product Code	CSB-PA758017
Storage	Upon receipt, store at -20°C or -80°C. Avoid repeated freeze.
Uniprot No.	P07550
Immunogen	Peptide sequence around phosphorylation site of serine 346 (R-S-S(p)-L-K) derived from Human Adrenergic Receptor beta2.
Raised In	Rabbit
Species Reactivity	Human
Specificity	The antibody detects endogenous level of Adrenergic Receptor beta2 only when phosphorylated at serine 346.
Tested Applications	ELISA,WB;WB:1:500-1:1000
Form	Rabbit IgG in phosphate buffered saline (without Mg ²⁺ and Ca ²⁺), pH 7.4, 150mM NaCl, 0.02% sodium azide and 50% glycerol.
Purification Method	Antibodies were produced by immunizing rabbits with synthetic phosphopeptide and KLH conjugates. Antibodies were purified by affinity-chromatography using epitope-specific phosphopeptide. Non-phospho specific antibodies were removed by chromatography usi
Clonality	Polyclonal
Alias	ADRB2R; B2AR; adrenergic receptor; beta-2;
Product Type	Polyclonal Antibody
Immunogen Species	Homo sapiens (Human)
Target Names	ADRB2

Image



Product Modify	Phospho-Ser346
Usage	For Research Use Only. Not for use in diagnostic or therapeutic procedures.