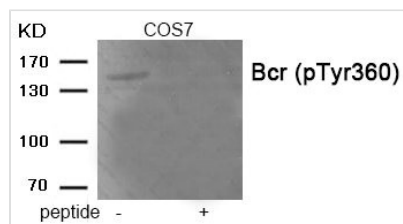




Phospho-BCR (Tyr360) Antibody

Product Code	CSB-PA950927
Storage	Upon receipt, store at -20°C or -80°C. Avoid repeated freeze.
Uniprot No.	P11274
Immunogen	Peptide sequence around phosphorylation site of tyrosine 360 (T-T-Y(p)-R-M) derived from Human Bcr.
Raised In	Rabbit
Species Reactivity	Human,Mouse
Specificity	The antibody detects endogenous level of Bcr only when phosphorylated at tyrosine 360.
Tested Applications	ELISA,WB;WB:1:500-1:1000
Form	Rabbit IgG in phosphate buffered saline (without Mg ²⁺ and Ca ²⁺), pH 7.4, 150mM NaCl, 0.02% sodium azide and 50% glycerol.
Purification Method	Antibodies were produced by immunizing rabbits with synthetic phosphopeptide and KLH conjugates. Antibodies were purified by affinity-chromatography using epitope-specific phosphopeptide. Non-phospho specific antibodies were removed by chromatography using
Clonality	Polyclonal
Alias	BCR; BCR protein; BCR1; Breakpoint cluster region protein;
Product Type	Polyclonal Antibody
Immunogen Species	Homo sapiens (Human)
Target Names	BCR

Image



Western blot analysis of extracts from COS7 tissue using Bcr (Phospho-Tyr360) antibody. The lane on the right is treated with the antigen-specific peptide.

Product Modify	Phospho-Tyr360
-----------------------	----------------