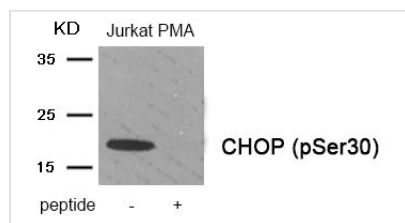




Phospho-DDIT3 (Ser30) Antibody

Product Code	CSB-PA799326
Storage	Upon receipt, store at -20°C or -80°C. Avoid repeated freeze.
Uniprot No.	P35638
Immunogen	Peptide sequence around phosphorylation site of serine30(V-L-S(p)-S-D) derived from Human CHOP .
Raised In	Rabbit
Species Reactivity	Human,Mouse
Specificity	The antibody detects endogenous level of CHOP only when phosphorylated at serine 30.
Tested Applications	ELISA,WB;WB:1:500-1:1000
Form	Rabbit IgG in phosphate buffered saline (without Mg ²⁺ and Ca ²⁺), pH 7.4, 150mM NaCl, 0.02% sodium azide and 50% glycerol.
Purification Method	Antibodies were produced by immunizing rabbits with synthetic phosphopeptide and KLH conjugates. Antibodies were purified by affinity-chromatography using epitope-specific phosphopeptide. Non-phospho specific antibodies were removed by chromatography using
Clonality	Polyclonal
Alias	C/EBP-homologous protein; DDIT3; GADD153; DNA-damage inducible transcript 3;
Product Type	Polyclonal Antibody
Immunogen Species	Homo sapiens (Human)
Target Names	DDIT3

Image



Western blot analysis of extracts from Jurkat cells treated with PMA using Phospho-CHOP (Ser30) antibody. The lane on the right is treated with the antigen-specific peptide.

Product Modify Phospho-Ser30