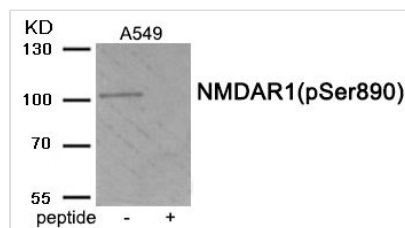




Phospho-GRIN1 (Ser890) Antibody

Product Code	CSB-PA239875
Storage	Upon receipt, store at -20°C or -80°C. Avoid repeated freeze.
Uniprot No.	Q05586
Immunogen	Peptide sequence around phosphorylation site of serine890(A-S-S(p)-F-K) derived from Human NMDAR1 .
Raised In	Rabbit
Species Reactivity	Human,Mouse,Rat
Specificity	The antibody detects endogenous level of NMDAR1 only when phosphorylated at serine 890.
Tested Applications	ELISA,WB;WB:1:500-1:1000
Form	Rabbit IgG in phosphate buffered saline (without Mg ²⁺ and Ca ²⁺), pH 7.4, 150mM NaCl, 0.02% sodium azide and 50% glycerol.
Purification Method	Antibodies were produced by immunizing rabbits with synthetic phosphopeptide and KLH conjugates. Antibodies were purified by affinity-chromatography using epitope-specific phosphopeptide. Non-phospho specific antibodies were removed by chromatography using
Clonality	Polyclonal
Alias	GLURZ1; GRIN1; N-methyl-D-aspartate receptor; NMZ1; NMDZ1
Product Type	Polyclonal Antibody
Immunogen Species	Homo sapiens (Human)
Target Names	GRIN1

Image



Western blot analysis of extracts from A549 tissue using Phospho-NMDAR1 (Ser890) antibody. The lane on the right is treated with the antigen-specific peptide.

Product Modify Phospho-Ser890