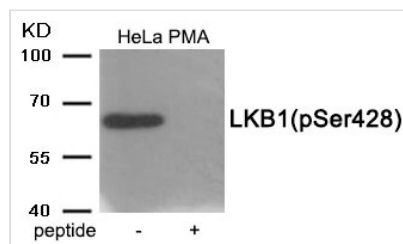




Phospho-STK11 (Ser428) Antibody

Product Code	CSB-PA902277
Storage	Upon receipt, store at -20°C or -80°C. Avoid repeated freeze.
Uniprot No.	Q15831
Immunogen	Peptide sequence around phosphorylation site of serine428 (R-L-S(p)-A-C) derived from Human LKB1 .
Raised In	Rabbit
Species Reactivity	Human,Mouse
Specificity	The antibody detects endogenous level of LKB1 only when phosphorylated at serine 428.
Tested Applications	ELISA,WB;WB:1:500-1:1000
Form	Rabbit IgG in phosphate buffered saline (without Mg ²⁺ and Ca ²⁺), pH 7.4, 150mM NaCl, 0.02% sodium azide and 50% glycerol.
Purification Method	Antibodies were produced by immunizing rabbits with synthetic phosphopeptide and KLH conjugates. Antibodies were purified by affinity-chromatography using epitope-specific phosphopeptide. Non-phospho specific antibodies were removed by chromatography using
Clonality	Polyclonal
Alias	Protein kinase; CAMK group; CAMKL family; LKB subfamily;
Product Type	Polyclonal Antibody
Immunogen Species	Homo sapiens (Human)
Target Names	STK11

Image



Western blot analysis of extracts from HeLa cells treated with PMA using Phospho-LKB1 (Ser428) antibody. The lane on the right is treated with the antigen-specific peptide.

Product Modify Phospho-Ser428