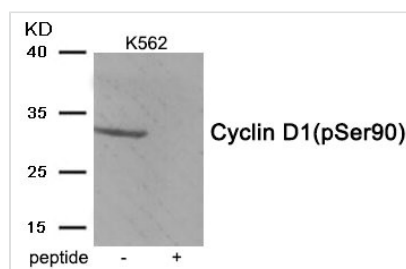




Phospho-CCND1 (Ser90) Antibody

Product Code	CSB-PA963558
Storage	Upon receipt, store at -20°C or -80°C. Avoid repeated freeze.
Uniprot No.	P24385
Immunogen	Peptide sequence around phosphorylation site of serine 90(F-L-S(p)-L-E) derived from Human Cyclin D1 .
Raised In	Rabbit
Species Reactivity	Human,Mouse,Rat
Specificity	The antibody detects endogenous level of Cyclin D1 only when phosphorylated at serine 90.
Tested Applications	ELISA,WB;WB:1:500-1:1000
Form	Rabbit IgG in phosphate buffered saline (without Mg ²⁺ and Ca ²⁺), pH 7.4, 150mM NaCl, 0.02% sodium azide and 50% glycerol.
Purification Method	Antibodies were produced by immunizing rabbits with synthetic phosphopeptide and KLH conjugates. Antibodies were purified by affinity-chromatography using epitope-specific phosphopeptide. Non-phospho specific antibodies were removed by chromatography usi
Clonality	Polyclonal
Alias	BCL1; CCND1; CYL-1; PRAD1; PRAD1 oncogene
Product Type	Polyclonal Antibody
Immunogen Species	Homo sapiens (Human)
Target Names	CCND1

Image



Western blot analysis of extracts from K562 tissue using Cyclin D1 (Phospho-Ser90) antibody. The lane on the right is treated with the antigen-specific peptide.

Product Modify	Phospho-Ser90
Usage	For Research Use Only. Not for use in diagnostic or therapeutic procedures.