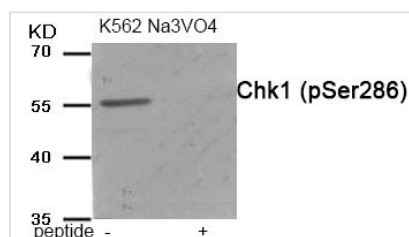




Phospho-CHEK1 (Ser286) Antibody

Product Code	CSB-PA064953
Storage	Upon receipt, store at -20°C or -80°C. Avoid repeated freeze.
Uniprot No.	O14757
Immunogen	Peptide sequence around phosphorylation site of serine 286 (S-E-S(p)-P-S) derived from Human Chk1.
Raised In	Rabbit
Species Reactivity	Human
Specificity	The antibody detects endogenous level of Chk1 only when phosphorylated at serine 286.
Tested Applications	ELISA, WB; WB: 1:500-1:1000
Form	Rabbit IgG in phosphate buffered saline (without Mg ²⁺ and Ca ²⁺), pH 7.4, 150mM NaCl, 0.02% sodium azide and 50% glycerol.
Purification Method	Antibodies were produced by immunizing rabbits with synthetic phosphopeptide and KLH conjugates. Antibodies were purified by affinity-chromatography using epitope-specific phosphopeptide. Non-phospho specific antibodies were removed by chromatography use
Clonality	Polyclonal
Alias	CHEK1; CHK1; CHK1 checkpoint homolog;
Product Type	Polyclonal Antibody
Immunogen Species	Homo sapiens (Human)
Target Names	CHEK1

Image



Western blot analysis of extracts from K562 cells treated with Na₃VO₄ using Chk1 (Phospho-Ser286) antibody. The lane on the right is treated with the antigen-specific peptide.

Product Modify	Phospho-Ser286
Usage	For Research Use Only. Not for use in diagnostic or therapeutic procedures.