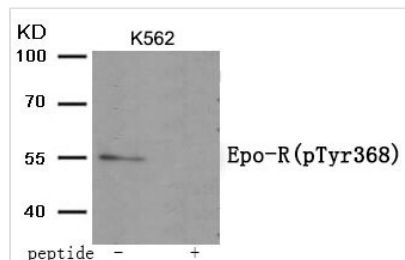




Phospho-EPOR (Tyr368) Antibody

Product Code	CSB-PA598485
Storage	Upon receipt, store at -20°C or -80°C. Avoid repeated freeze.
Uniprot No.	P19235
Immunogen	Peptide sequence around phosphorylation site of Tyrosine 368 (D-T-Y(p)-L-V) derived from Human Epo-R.
Raised In	Rabbit
Species Reactivity	Human,Mouse,Rat
Specificity	The antibody detects endogenous level of Epo-R only when phosphorylated at tyrosine 368.
Tested Applications	ELISA,WB;WB:1:500-1:1000
Form	Rabbit IgG in phosphate buffered saline (without Mg ²⁺ and Ca ²⁺), pH 7.4, 150mM NaCl, 0.02% sodium azide and 50% glycerol.
Purification Method	Antibodies were produced by immunizing rabbits with synthetic phosphopeptide and KLH conjugates. Antibodies were purified by affinity-chromatography using epitope-specific phosphopeptide. Non-phospho specific antibodies were removed by chromatography
Clonality	Polyclonal
Alias	EPO R; EPO-R; epor;
Product Type	Polyclonal Antibody
Immunogen Species	Homo sapiens (Human)
Target Names	EPOR

Image



Western blot analysis of extracts from K562 tissue using Epo-R (Phospho-Tyr368) antibody. The lane on the right is treated with the antigen-specific peptide.

Product Modify	Phospho-Tyr368
Usage	For Research Use Only. Not for use in diagnostic or therapeutic procedures.