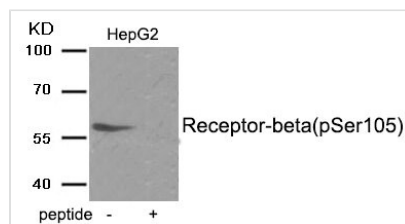




Phospho-ESR2 (Ser105) Antibody

Product Code	CSB-PA177881
Storage	Upon receipt, store at -20°C or -80°C. Avoid repeated freeze.
Uniprot No.	Q92731
Immunogen	Peptide sequence around phosphorylation site of serine105(Q-R-S(p)-P-W) derived from Human Estrogen Receptor- beta.
Raised In	Rabbit
Species Reactivity	Human,Mouse,Rat
Specificity	The antibody detects endogenous level of Estrogen Receptor- beta only when phosphorylated at serine 105.
Tested Applications	ELISA,WB;WB:1:500-1:1000
Form	Rabbit IgG in phosphate buffered saline (without Mg ²⁺ and Ca ²⁺), pH 7.4, 150mM NaCl, 0.02% sodium azide and 50% glycerol.
Purification Method	Antibodies were produced by immunizing rabbits with synthetic phosphopeptide and KLH conjugates. Antibodies were purified by affinity-chromatography using epitope-specific phosphopeptide. Non-phospho specific antibodies were removed by chromatography usi
Clonality	Polyclonal
Alias	ESR2; ESTRB; Estrogen receptor beta; NR3A2;
Product Type	Polyclonal Antibody
Immunogen Species	Homo sapiens (Human)
Target Names	ESR2

Image



Western blot analysis of extracts from HepG2 tissue using Estrogen Receptor- beta (Phospho-Ser105) antibody. The lane on the right is treated with the antigen-specific peptide.

Product Modify	Phospho-Ser105
-----------------------	----------------