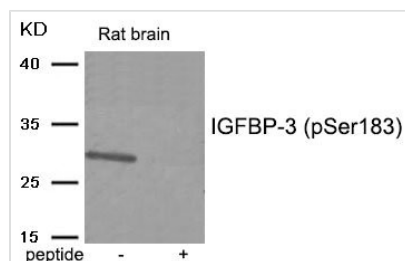




Phospho-IGFBP3 (Ser183) Antibody

Product Code	CSB-PA566885
Storage	Upon receipt, store at -20°C or -80°C. Avoid repeated freeze.
Uniprot No.	P17936
Immunogen	Peptide sequence around phosphorylation site of serine 183(K-D-S(p)-Q-R) derived from Human IGFBP-3 .
Raised In	Rabbit
Species Reactivity	Human,Mouse
Specificity	The antibody detects endogenous level of IGFBP-3 only when phosphorylated at serine 183.
Tested Applications	ELISA,WB;WB:1:500-1:1000
Form	Rabbit IgG in phosphate buffered saline (without Mg ²⁺ and Ca ²⁺), pH 7.4, 150mM NaCl, 0.02% sodium azide and 50% glycerol.
Purification Method	Antibodies were produced by immunizing rabbits with synthetic phosphopeptide and KLH conjugates. Antibodies were purified by affinity-chromatography using epitope-specific phosphopeptide. Non-phospho specific antibodies were removed by chromatography usi
Clonality	Polyclonal
Alias	IBP-3; IBP3; IGF-binding protein 3; IGFBP3; Insulin-like growth factor binding protein 3 precursor
Product Type	Polyclonal Antibody
Immunogen Species	Homo sapiens (Human)
Target Names	IGFBP3

Image



Western blot analysis of extracts from Rat brain tissue using IGFBP-3 (Phospho-Ser183) antibody. The lane on the right is treated with the antigen-specific peptide.

Product Modify	Phospho-Ser183
Usage	For Research Use Only. Not for use in diagnostic or therapeutic procedures.