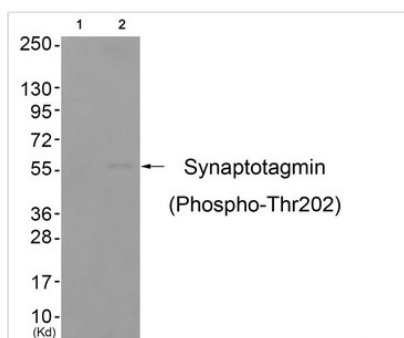




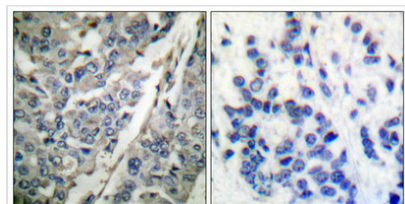
Phospho-SYT1 (Thr202) Antibody

Product Code	CSB-PA438989
Storage	Upon receipt, store at -20°C or -80°C. Avoid repeated freeze.
Uniprot No.	P21579
Immunogen	Peptide sequence around phosphorylation site of threonine 202(R-K-T(p)-L-N) derived from Human Synaptotagmin.
Raised In	Rabbit
Species Reactivity	Human,Mouse,Rat
Specificity	The antibody detects endogenous levels of Synaptotagmin only when phosphorylated at threonine 202.
Tested Applications	ELISA,WB,IHC;WB:1:500-1:1000,IHC:1:50-1:100
Form	Rabbit IgG in phosphate buffered saline (without Mg ²⁺ and Ca ²⁺), pH 7.4, 150mM NaCl, 0.02% sodium azide and 50% glycerol.
Purification Method	Antibodies were produced by immunizing rabbits with synthetic phosphopeptide and KLH conjugates. Antibodies were purified by affinity-chromatography using epitope-specific phosphopeptide. Non-phospho specific antibodies were removed by chromatography
Clonality	Polyclonal
Alias	LAG; LAP18; STN1; ProsoLin; stathmin
Product Type	Polyclonal Antibody
Immunogen Species	Homo sapiens (Human)
Target Names	SYT1

Image



Western blot analysis of extracts from colo cells (Lane 2), using Synaptotagmin (Phospho-Thr202) Antibody. The lane on the left is treated with antigen-specific peptide.



Immunohistochemical analysis of paraffin-embedded human breast carcinoma tissue using Synaptotagmin (phospho-Thr202) antibody (left) or the same antibody preincubated with blocking peptide (right).



Product Modify

Phospho-Thr202

Usage

For Research Use Only. Not for use in diagnostic or therapeutic procedures.