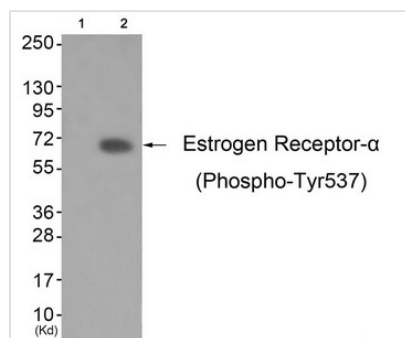




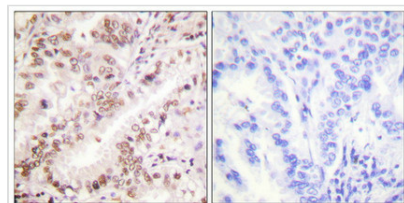
# Phospho-ESR1 (Tyr537) Antibody

|                            |  |
|----------------------------|--|
| <b>Product Code</b>        | CSB-PA265011   |
| <b>Storage</b>             | Upon receipt, store at -20°C or -80°C. Avoid repeated freeze.  |
| <b>Uniprot No.</b>         | P03372   |
| <b>Immunogen</b>           | Peptide sequence around phosphorylation site of tyrosine 537(P-L-Y(p)-D-L) derived from Human Estrogen Receptor- $\alpha$ .  |
| <b>Raised In</b>           | Rabbit   |
| <b>Species Reactivity</b>  | Human,Mouse  |
| <b>Specificity</b>         | The antibody detects endogenous levels of ER- $\alpha$ only when phosphorylated at tyrosine 537.   |
| <b>Tested Applications</b> | ELISA,WB,IHC;WB:1:500-1:1000,IHC:1:50-1:100  |
| <b>Form</b>                | Rabbit IgG in phosphate buffered saline (without Mg <sup>2+</sup> and Ca <sup>2+</sup> ), pH 7.4, 150mM NaCl, 0.02% sodium azide and 50% glycerol.   |
| <b>Purification Method</b> | Antibodies were produced by immunizing rabbits with synthetic phosphopeptide and KLH conjugates. Antibodies were purified by affinity-chromatography using epitope-specific phosphopeptide. Non-phospho specific antibodies were removed by chromatography using |
| <b>Clonality</b>           | Polyclonal   |
| <b>Alias</b>               | ER; ESR; ESR1; ESTR; NR3A1   |
| <b>Product Type</b>        | Polyclonal Antibody  |
| <b>Immunogen Species</b>   | Homo sapiens (Human)   |
| <b>Target Names</b>        | ESR1   |

## Image



Western blot analysis of extracts from K562 cells (Lane 2), using Estrogen Receptor- $\alpha$  (Phospho-Tyr537) Antibody. The lane on the left is treated with antigen-specific peptide.



Immunohistochemical analysis of paraffin-embedded human lung carcinoma tissue using Estrogen Receptor- $\alpha$  (Phospho-Tyr537) antibody (left) or the same antibody preincubated with blocking peptide (right).

**Product Modify**

Phospho-Tyr537