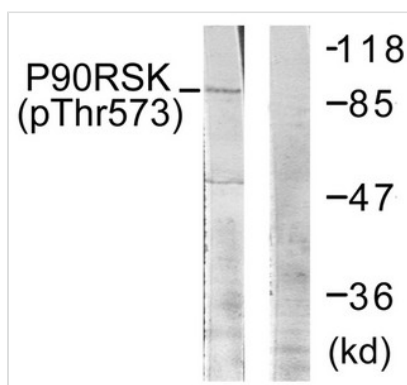




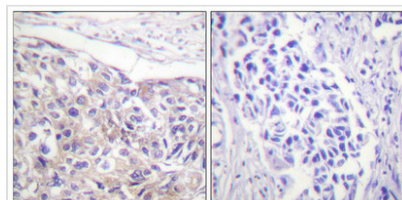
Phospho-RPS6KA1 (Thr573) Antibody

| | |
|----------------------------|--|
| Product Code | CSB-PA240123 |
| Storage | Upon receipt, store at -20°C or -80°C. Avoid repeated freeze. |
| Uniprot No. | Q15418 |
| Immunogen | Peptide sequence around phosphorylation site of threonine 573(L-M-T(p)-P-C) derived from Human p90 RSK. |
| Raised In | Rabbit |
| Species Reactivity | Human,Mouse,Rat |
| Specificity | The antibody detects endogenous levels of P90RSK only when phosphorylated at threonine 573. |
| Tested Applications | ELISA,WB,IHC;WB:1:500-1:1000,IHC:1:50-1:100 |
| Form | Rabbit IgG in phosphate buffered saline (without Mg ²⁺ and Ca ²⁺), pH 7.4, 150mM NaCl, 0.02% sodium azide and 50% glycerol. |
| Purification Method | Antibodies were produced by immunizing rabbits with synthetic phosphopeptide and KLH conjugates. Antibodies were purified by affinity-chromatography using epitope-specific phosphopeptide. Non-phospho specific antibodies were removed by chromatography usi |
| Clonality | Polyclonal |
| Alias | KS6A1; p90RSK1; RSK1; RPS6KA1; |
| Product Type | Polyclonal Antibody |
| Immunogen Species | Homo sapiens (Human) |
| Target Names | RPS6KA1 |

Image



Western blot analysis of extracts from 293 cells treated with UV using p90 RSK (Phospho-Thr573) Antibody. The lane on the right is treated with the antigen-specific peptide.



Immunohistochemical analysis of paraffin-embedded human breast carcinoma tissue using p90 RSK (Phospho-Thr573) antibody (left) or the same antibody preincubated with blocking peptide (right).



Product Modify

Phospho-Thr573

Usage

For Research Use Only. Not for use in diagnostic or therapeutic procedures.