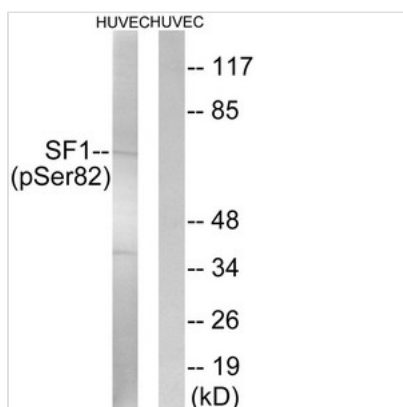




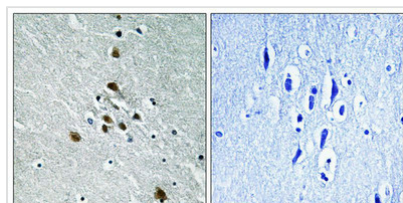
Phospho-SF1 (Ser82) Antibody

Product Code	CSB-PA948905
Storage	Upon receipt, store at -20°C or -80°C. Avoid repeated freeze.
Uniprot No.	Q15637
Immunogen	Peptide sequence around phosphorylation site of Serine 82(S-P-S(p)-P-E) derived from Human SF1.
Raised In	Rabbit
Species Reactivity	Human,Mouse
Specificity	The antibody detects endogenous levels of SF1 only when phosphorylated at serine 82.
Tested Applications	ELISA,WB,IHC;WB:1:500-1:1000,IHC:1:50-1:100
Form	Rabbit IgG in phosphate buffered saline (without Mg ²⁺ and Ca ²⁺), pH 7.4, 150mM NaCl, 0.02% sodium azide and 50% glycerol.
Purification Method	Antibodies were produced by immunizing rabbits with synthetic phosphopeptide and KLH conjugates. Antibodies were purified by affinity-chromatography using epitope-specific phosphopeptide. Non-phospho specific antibodies were removed by chromatography usi
Clonality	Polyclonal
Alias	BBP; CW17; SF01; ZFM1; ZNF162
Product Type	Polyclonal Antibody
Immunogen Species	Homo sapiens (Human)
Target Names	SF1

Image



Western blot analysis of extracts from HUVEC cells treated with anisomycin using SF1 (Phospho-Ser82) Antibody. The lane on the right is treated with the antigen-specific peptide.



Immunohistochemical analysis of paraffin-embedded human brain tissue using SF1 (Phospho-Ser82) antibody (left) or the same antibody preincubated with blocking peptide (right).



Product Modify

Phospho-Ser82

Usage

For Research Use Only. Not for use in diagnostic or therapeutic procedures.