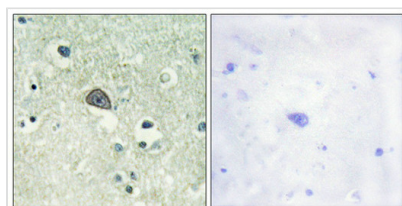




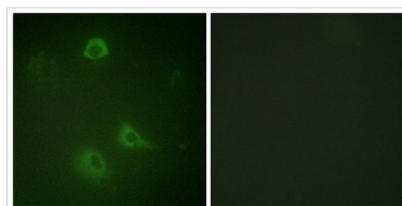
# Phospho-GRIN1 (Ser890) Antibody

<b>Product Code</b>	CSB-PA126380
<b>Storage</b>	Upon receipt, store at -20°C or -80°C. Avoid repeated freeze.
<b>Uniprot No.</b>	Q05586
<b>Immunogen</b>	Peptide sequence around phosphorylation site of Serine 890(A-S-S(p)-F-K) derived from Human NMDAR1.
<b>Raised In</b>	Rabbit
<b>Species Reactivity</b>	Human,Mouse,Rat
<b>Specificity</b>	The antibody detects endogenous levels of NMDAR1 only when phosphorylated at serine 890.
<b>Tested Applications</b>	ELISA,IHC,IF;IHC:1:50-1:100,IF:1:100-1:200
<b>Form</b>	Rabbit IgG in phosphate buffered saline (without Mg <sup>2+</sup> and Ca <sup>2+</sup> ), pH 7.4, 150mM NaCl, 0.02% sodium azide and 50% glycerol.
<b>Purification Method</b>	Antibodies were produced by immunizing rabbits with synthetic phosphopeptide and KLH conjugates. Antibodies were purified by affinity-chromatography using epitope-specific phosphopeptide. Non-phospho specific antibodies were removed by chromatography
<b>Clonality</b>	Polyclonal
<b>Alias</b>	GLURZ1; GRIN1; NMD-R1; NMDZ1; NMZ1
<b>Product Type</b>	Polyclonal Antibody
<b>Immunogen Species</b>	Homo sapiens (Human)
<b>Target Names</b>	GRIN1

## Image



Immunohistochemical analysis of paraffin-embedded human brain tissue using NMDAR1 (Phospho-Ser890) antibody (left) or the same antibody preincubated with blocking peptide (right).



Immunofluorescence staining of methanol-fixed A549 cells using NMDAR1 (Phospho-Ser890) Antibody.

**Product Modify** Phospho-Ser890