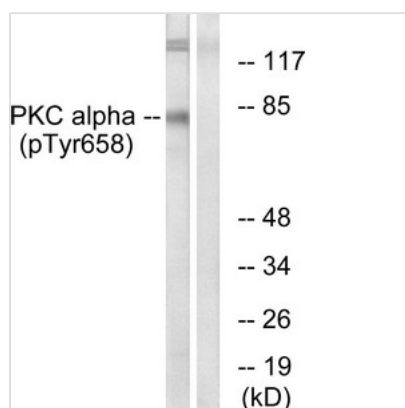




# Phospho-PRKCA (Tyr658) Antibody

<b>Product Code</b>	CSB-PA060190
<b>Storage</b>	Upon receipt, store at -20°C or -80°C. Avoid repeated freeze.
<b>Uniprot No.</b>	P17252
<b>Immunogen</b>	Peptide sequence around phosphorylation site of tyrosine 658(F-S-Y(p)-V-N) derived from Human PKC $\alpha$ .
<b>Raised In</b>	Rabbit
<b>Species Reactivity</b>	Human,Mouse,Rat
<b>Specificity</b>	The antibody detects endogenous levels of PKC $\alpha$ only when phosphorylated at tyrosine 658.
<b>Tested Applications</b>	ELISA,WB;WB:1:500-1:1000
<b>Form</b>	Rabbit IgG in phosphate buffered saline (without Mg <sup>2+</sup> and Ca <sup>2+</sup> ), pH 7.4, 150mM NaCl, 0.02% sodium azide and 50% glycerol.
<b>Purification Method</b>	Antibodies were produced by immunizing rabbits with synthetic phosphopeptide and KLH conjugates. Antibodies were purified by affinity-chromatography using epitope-specific phosphopeptide. Non-phospho specific antibodies were removed by chromatography using
<b>Clonality</b>	Polyclonal
<b>Alias</b>	PKC-alpha; KPCA; PKC III; PKC-A;
<b>Product Type</b>	Polyclonal Antibody
<b>Immunogen Species</b>	Homo sapiens (Human)
<b>Target Names</b>	PRKCA

## Image



Western blot analysis of extracts from COLO205 cells using PKC  $\alpha$  (Phospho-Tyr658) Antibody. The lane on the right is treated with the antigen-specific peptide.

<b>Product Modify</b>	Phospho-Tyr658
<b>Usage</b>	For Research Use Only. Not for use in diagnostic or therapeutic procedures.