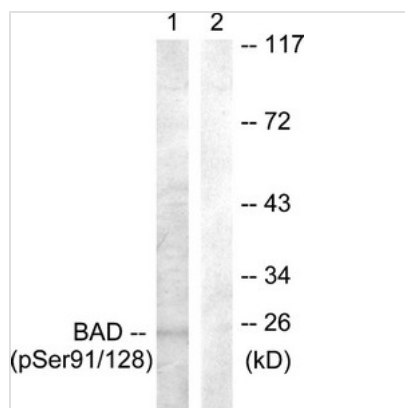




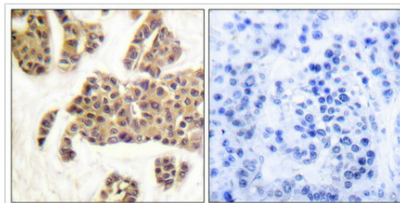
Phospho-BAD (Ser91/128) Antibody

Product Code	CSB-PA148354
Storage	Upon receipt, store at -20°C or -80°C. Avoid repeated freeze.
Uniprot No.	Q92934
Immunogen	Peptide sequence around phosphorylation site of Serine 91 (E-P-S(p)-P-F) derived from Human BAD or Serine 128 (E-P-S(p)-P-F) derived from Mouse BAD.
Raised In	Rabbit
Species Reactivity	Human,Mouse,Rat
Specificity	The antibody detects endogenous levels of BAD only when phosphorylated at serine 91/ serine 128.
Tested Applications	ELISA,WB,IHC;WB:1:500-1:1000,IHC:1:50-1:100
Form	Rabbit IgG in phosphate buffered saline (without Mg ²⁺ and Ca ²⁺), pH 7.4, 150mM NaCl, 0.02% sodium azide and 50% glycerol.
Purification Method	Antibodies were produced by immunizing rabbits with synthetic phosphopeptide and KLH conjugates. Antibodies were purified by affinity-chromatography using epitope-specific phosphopeptide. Non-phospho specific antibodies were removed by chromatography using
Clonality	Polyclonal
Alias	BAD; BBC6; BCL2L8; Bcl- XL/Bcl-2 associated death promoter;
Product Type	Polyclonal Antibody
Immunogen Species	Homo sapiens (Human)
Target Names	BAD

Image



Western blot analysis of extracts from COS7 cells treated with TNF-α using BAD (Phospho-Ser91/128) Antibody. The lane on the right is treated with the antigen-specific peptide.



Immunohistochemical analysis of paraffin-embedded human breast carcinoma tissue using BAD (Phospho-Ser91/128) antibody (left) or the same antibody preincubated with blocking peptide (right).

Product Modify

Phospho-Ser91/128