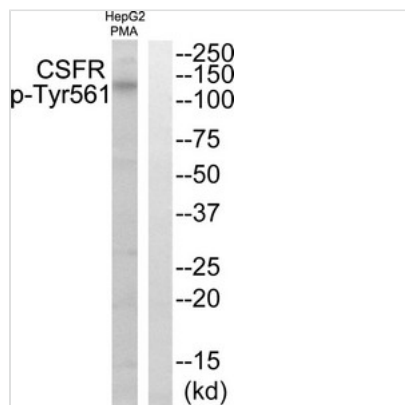




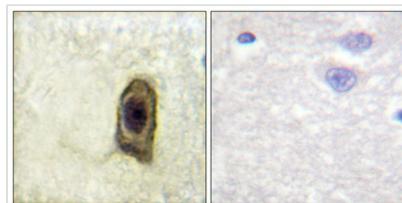
Phospho-CSF1R (Tyr561) Antibody

Product Code	CSB-PA924224
Storage	Upon receipt, store at -20°C or -80°C. Avoid repeated freeze.
Uniprot No.	P07333
Immunogen	Peptide sequence around phosphorylation site of tyrosine 561 (N-S-Y(p)-T-F) derived from Human CSFR .
Raised In	Rabbit
Species Reactivity	Human,Mouse
Specificity	The antibody detects endogenous levels of CSFR only when phosphorylated at tyrosine 561.
Tested Applications	ELISA,WB,IHC;WB:1:500-1:1000,IHC:1:50-1:100
Form	Rabbit IgG in phosphate buffered saline (without Mg ²⁺ and Ca ²⁺), pH 7.4, 150mM NaCl, 0.02% sodium azide and 50% glycerol.
Purification Method	Antibodies were produced by immunizing rabbits with synthetic phosphopeptide and KLH conjugates. Antibodies were purified by affinity-chromatography using epitope-specific phosphopeptide. Non-phospho specific antibodies were removed by chromatography usi
Clonality	Polyclonal
Alias	CD115; CSF-1-R; CSFMR; FMS; M-CSFR
Product Type	Polyclonal Antibody
Immunogen Species	Homo sapiens (Human)
Target Names	CSF1R

Image



Western blot analysis of extracts from HepG2 cells treated with PMA using CSFR (Phospho-Tyr561) Antibody. The lane on the right is treated with the antigen-specific peptide.



Immunohistochemical analysis of paraffin-embedded human brain, using CSFR (Phospho-Tyr561) antibody (left) or the same antibody preincubated with blocking peptide (right).



Product Modify

Phospho-Tyr561

Usage

For Research Use Only. Not for use in diagnostic or therapeutic procedures.