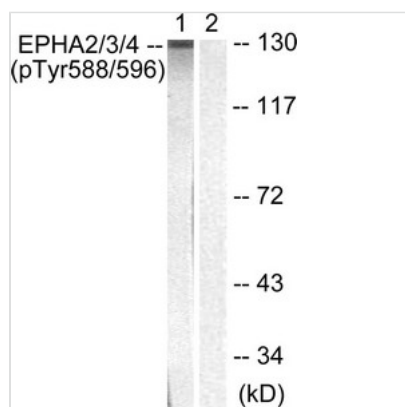




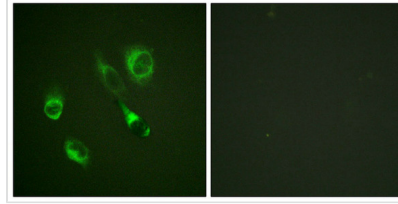
Phospho-EPHA2/EPHA3/EPHA4 (Tyr588/596) Antibody

Product Code	CSB-PA438798
Storage	Upon receipt, store at -20°C or -80°C. Avoid repeated freeze.
Uniprot No.	P29317
Immunogen	Peptide sequence around phosphorylation site of tyrosine 588/596 (K-T-Y(p)-V-R)/(R-T-Y(p)-V-D) derived from Human EPHA2/3/4.
Raised In	Rabbit
Species Reactivity	Human,Mouse
Specificity	The antibody detects endogenous levels of EPHA2/3/4 only when phosphorylated at tyrosine 588/596
Tested Applications	ELISA,WB,IF;WB:1:500-1:1000,IF:1:100-1:200
Form	Rabbit IgG in phosphate buffered saline (without Mg ²⁺ and Ca ²⁺), pH 7.4, 150mM NaCl, 0.02% sodium azide and 50% glycerol.
Purification Method	Antibodies were produced by immunizing rabbits with synthetic phosphopeptide and KLH conjugates. Antibodies were purified by affinity-chromatography using epitope-specific phosphopeptide. Non-phospho specific antibodies were removed by chromatography
Clonality	Polyclonal
Alias	ECK; MPK-5; SEK2; kinase EphA2;
Product Type	Polyclonal Antibody
Immunogen Species	Homo sapiens (Human)
Target Names	EPHA2/EPHA3/EPHA4

Image



Western blot analysis of extracts from HepG2 cells using EPHA2/3/4 (Phospho-Tyr588/596) Antibody. The lane on the right is treated with the antigen-specific peptide.



Immunofluorescence staining of methanol-fixed HeLa cells using EPHA2/3/4 (Phospho-Tyr588/596) Antibody.

Product Modify

Phospho-Tyr588/596

Usage

For Research Use Only. Not for use in diagnostic or therapeutic procedures.