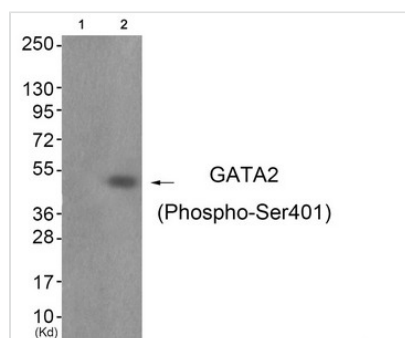




Phospho-GATA2 (Ser401) Antibody

Product Code	CSB-PA148770
Storage	Upon receipt, store at -20°C or -80°C. Avoid repeated freeze.
Uniprot No.	P23769
Immunogen	Peptide sequence around phosphorylation site of Serine 401(K-M-S(p)-N-K) derived from Human GATA2 .
Raised In	Rabbit
Species Reactivity	Human,Mouse
Specificity	The antibody detects endogenous levels of GATA2 only when phosphorylated at serine 401.
Tested Applications	ELISA,WB;WB:1:500-1:1000
Form	Rabbit IgG in phosphate buffered saline (without Mg ²⁺ and Ca ²⁺), pH 7.4, 150mM NaCl, 0.02% sodium azide and 50% glycerol.
Purification Method	Antibodies were produced by immunizing rabbits with synthetic phosphopeptide and KLH conjugates. Antibodies were purified by affinity-chromatography using epitope-specific phosphopeptide. Non-phospho specific antibodies were removed by chromatography usi
Clonality	Polyclonal
Alias	GATA binding protein 2; Endothelial transcription factor GATA-2;
Product Type	Polyclonal Antibody
Immunogen Species	Homo sapiens (Human)
Target Names	GATA2

Image



Western blot analysis of extracts from JK cells (Lane 2), using GATA2 (Phospho-Ser401) Antibody. The lane on the left is treated with antigen-specific peptide.

Product Modify Phospho-Ser401