



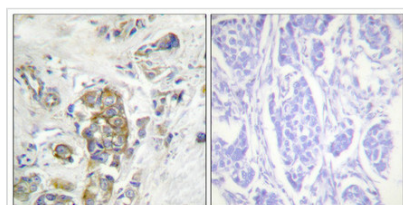
Phospho-ITGB4 (Tyr1510) Antibody

Product Code	CSB-PA111732
Storage	Upon receipt, store at -20°C or -80°C. Avoid repeated freeze.
Uniprot No.	P16144
Immunogen	Peptide sequence around phosphorylation site of tyrosine1510(R-D-Y(p)-S-T) derived from Human ITGB4 .
Raised In	Rabbit
Species Reactivity	Human,Mouse,Rat
Specificity	The antibody detects endogenous levels of ITGB4 only when phosphorylated at tyrosine 1510.
Tested Applications	ELISA,WB,IHC;WB:1:500-1:1000,IHC:1:50-1:100
Form	Rabbit IgG in phosphate buffered saline (without Mg ²⁺ and Ca ²⁺), pH 7.4, 150mM NaCl, 0.02% sodium azide and 50% glycerol.
Purification Method	Antibodies were produced by immunizing rabbits with synthetic phosphopeptide and KLH conjugates. Antibodies were purified by affinity-chromatography using epitope-specific phosphopeptide. Non-phospho specific antibodies were removed by chromatography usi
Clonality	Polyclonal
Alias	GP150; ITB4; CD104 antigen;
Product Type	Polyclonal Antibody
Immunogen Species	Homo sapiens (Human)
Target Names	ITGB4

Image



Western blot analysis of extracts from HepG2 cells treated with Na₂VO₃ using ITGB4 (Phospho-Tyr1510) Antibody. The lane on the right is treated with the antigen-specific peptide.



Immunohistochemical analysis of paraffin-embedded human breast carcinoma tissue, using ITGB4 (Phospho-Tyr1510) antibody (left) or the same antibody preincubated with blocking peptide (right).

Product Modify Phospho-Tyr1510