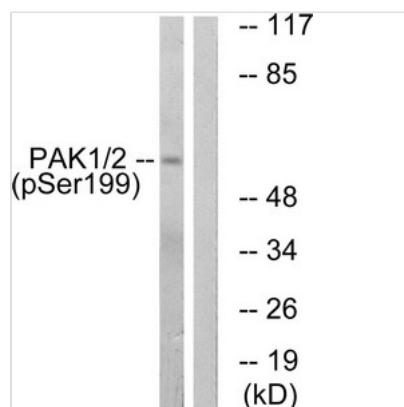




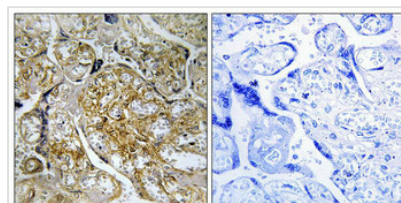
Phospho-PAK1 (Ser199) Antibody

Product Code	CSB-PA199192
Storage	Upon receipt, store at -20°C or -80°C. Avoid repeated freeze.
Uniprot No.	Q13153
Immunogen	Peptide sequence around phosphorylation site of Serine 199(T-K-S(p)-V-I) derived from Human PAK1.
Raised In	Rabbit
Species Reactivity	Human,Mouse,Rat
Specificity	The antibody detects endogenous levels of PAK1/2 only when phosphorylated at serine 199.
Tested Applications	ELISA,WB,IHC;WB:1:500-1:1000,IHC:1:50-1:100
Form	Rabbit IgG in phosphate buffered saline (without Mg ²⁺ and Ca ²⁺), pH 7.4, 150mM NaCl, 0.02% sodium azide and 50% glycerol.
Purification Method	Antibodies were produced by immunizing rabbits with synthetic phosphopeptide and KLH conjugates. Antibodies were purified by affinity-chromatography using epitope-specific phosphopeptide. Non-phospho specific antibodies were removed by chromatography usi
Clonality	Polyclonal
Alias	ADRB2; PAK 1; P65-PAK; P68-PAK;
Product Type	Polyclonal Antibody
Immunogen Species	Homo sapiens (Human)
Target Names	PAK1

Image



Western blot analysis of extracts from LOVO cells treated with starved using PAK1/2 (Phospho-Ser199) Antibody. The lane on the right is treated with the antigen-specific peptide.



Immunohistochemical analysis of paraffin-embedded human placenta tissue using PAK1/2 (Phospho-Ser199) antibody (left) or the same antibody preincubated with blocking peptide (right).



Product Modify

Phospho-Ser199

Usage

For Research Use Only. Not for use in diagnostic or therapeutic procedures.