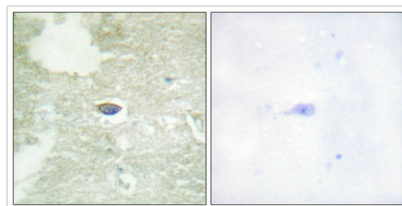




Phospho-TGFR2 (Ser225/250) Antibody

Product Code	CSB-PA911102
Storage	Upon receipt, store at -20°C or -80°C. Avoid repeated freeze.
Uniprot No.	P37173
Immunogen	Peptide sequence around phosphorylation site of Serine 225/250(D-R-S(p)-D-I) derived from Human TGF β Receptor II.
Raised In	Rabbit
Species Reactivity	Human,Mouse,Rat
Specificity	The antibody detects endogenous levels of TGF β Receptor II only when phosphorylated at serine 225/250.
Tested Applications	ELISA,IHC;IHC:1:50-1:100
Form	Rabbit IgG in phosphate buffered saline (without Mg ²⁺ and Ca ²⁺), pH 7.4, 150mM NaCl, 0.02% sodium azide and 50% glycerol.
Purification Method	Antibodies were produced by immunizing rabbits with synthetic phosphopeptide and KLH conjugates. Antibodies were purified by affinity-chromatography using epitope-specific phosphopeptide. Non-phospho specific antibodies were removed by chromatography using
Clonality	Polyclonal
Alias	TGF-betaR2; TGFR2; kinase TGF-beta-R2;
Product Type	Polyclonal Antibody
Immunogen Species	Homo sapiens (Human)
Target Names	TGFR2

Image



Immunohistochemical analysis of paraffin-embedded human brain tissue using TGF β Receptor II (Phospho-Ser225/250) antibody (left) or the same antibody preincubated with blocking peptide (right).

Product Modify	Phospho-Ser225/250
-----------------------	--------------------