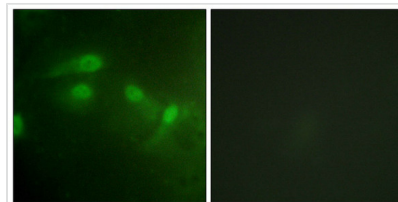




# Phospho-MDM2 (Ser186/Ser188) Antibody

<b>Product Code</b>	CSB-PA570037
<b>Storage</b>	Upon receipt, store at -20°C or -80°C. Avoid repeated freeze.
<b>Uniprot No.</b>	Q00987
<b>Immunogen</b>	Peptide sequence around phosphorylation site of Ser186/Ser188(H-K-S(p)-D-S(p)-I-S) derived from Human MDM2.
<b>Raised In</b>	Rabbit
<b>Species Reactivity</b>	Human
<b>Specificity</b>	The antibody detects endogenous levels of MDM2 only when phosphorylated at serine 186 and serine 188.
<b>Tested Applications</b>	ELISA,IF;IF:1:100-1:200
<b>Form</b>	Rabbit IgG in phosphate buffered saline (without Mg <sup>2+</sup> and Ca <sup>2+</sup> ), pH 7.4, 150mM NaCl, 0.02% sodium azide and 50% glycerol.
<b>Purification Method</b>	Antibodies were produced by immunizing rabbits with synthetic phosphopeptide and KLH conjugates. Antibodies were purified by affinity-chromatography using epitope-specific phosphopeptide. Non-phospho specific antibodies were removed by chromatography usi
<b>Clonality</b>	Polyclonal
<b>Alias</b>	Oncoprotein Mdm2; p53-binding protein Mdm2; Ubiquitin-protein ligase E3 Mdm2;
<b>Product Type</b>	Polyclonal Antibody
<b>Immunogen Species</b>	Homo sapiens (Human)
<b>Target Names</b>	MDM2

## Image



Immunofluorescence staining of methanol-fixed HeLa cells using MDM2 (Phospho-Ser186/Ser188) Antibody.

**Product Modify** Phospho-Ser186/Ser188